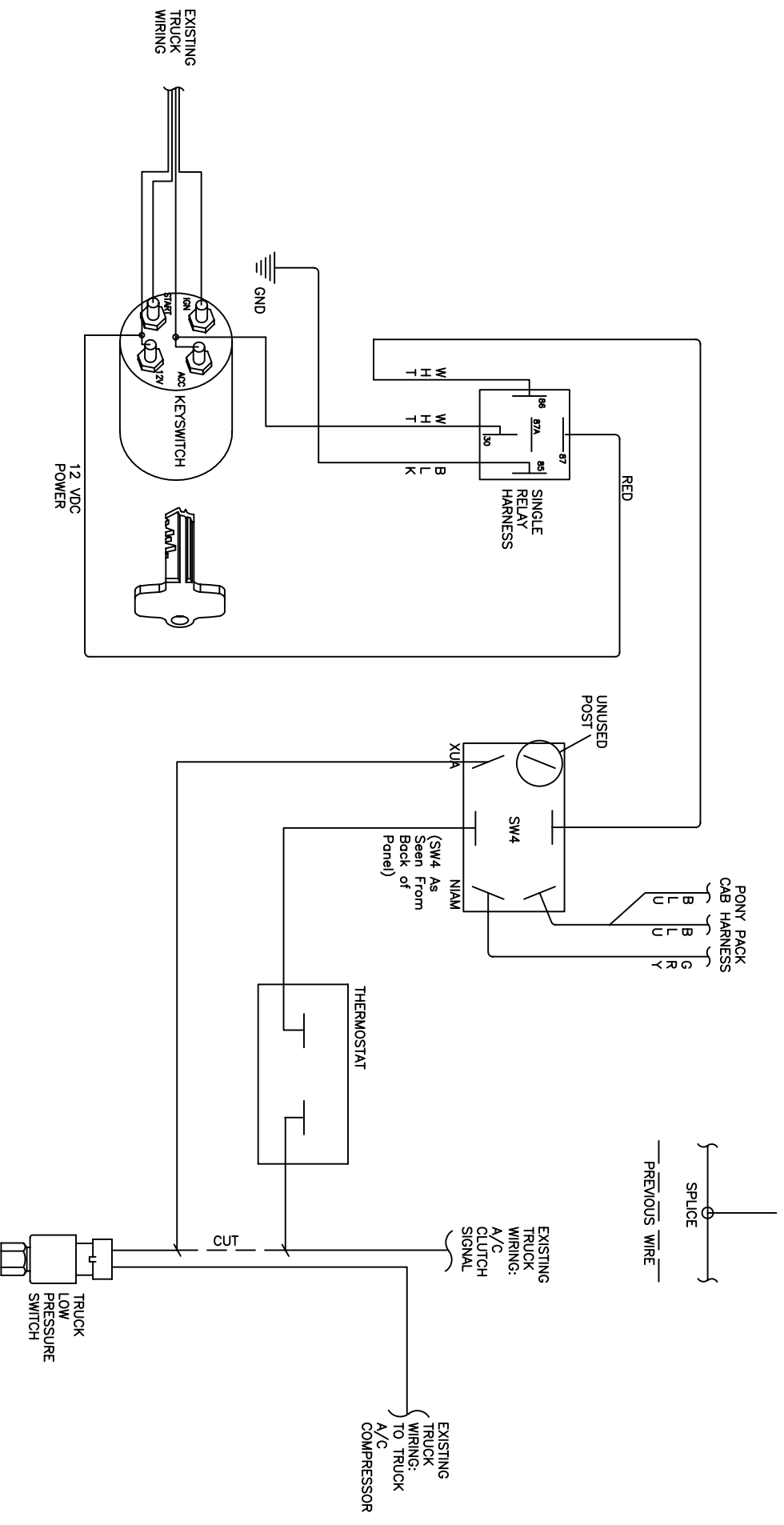


MAKE, MODEL, YEAR

STERLING



MAIN/AUX Switch

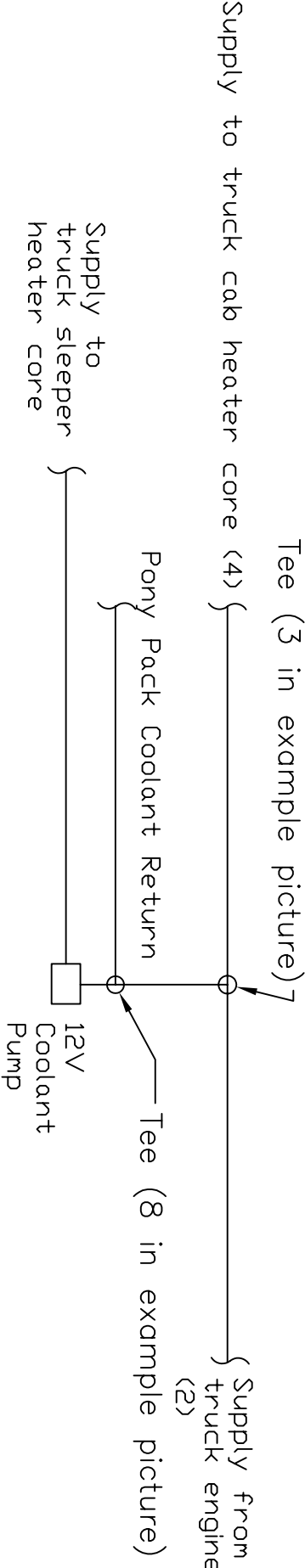
This switch controls which A/C System, Pony Pack (AUX) or truck (MAIN) will provide cooling when the driver turns on the A/C from the truck's dashboard controls.

PONY PACK, INC.
Albuquerque, NM

Sterling Wiring

REV 0 DATE 12/19/07

MAKE, MODEL, YEAR
STERLING w/ MERCEDES



PONY PACK, INC. Albuquerque, NM		Sterling Coolant Pump Routing	
REV 0	DATE 12/21/07		

Plumbing Install Guide

Sterling with Mercedes Engine

Use this as a general plumbing guide. Photos and schematics are included as a reference to these instructions. Some of the existing truck plumbing may need to be relocated to better accommodate the Pony Pack plumbing requirements.

The main plumbing tasks are as follows...

- Routing and installation of the **supply** hose. This is the hose that will supply coolant from the truck plumbing to the Pony Pack.
- Routing and installation of the **return** hose. This is the hose that will return hot coolant from the Pony Pack.
- Installation and wiring of the **cab heat pump**.

There are two metal coolant lines on the passenger-side of the engine, near the firewall, that supply coolant to the truck/cab heater cores, and return the coolant to the engine. These are marked **1** and **2** in the example picture. The hard-line that connects to the head is the **truck coolant supply (2)** to the heater cores, and the hard-line that connects to the drivers-side engine block/water pump is the **truck return (1)**. Tee fittings must be placed on these lines to intercept the coolant flow, in order to supply coolant *to* the Pony Pack, and to return hot water *from the Pony Pack*, to the truck/cab heater cores. These fittings can be seen in the picture at **3 and 7**.

- The Pony Pack coolant source is the heater core coolant return from the truck cab and truck sleeper, which are tee'd together. (**See 6 and 7 in picture**)
- The Pony Pack coolant return (hot water from Pony Pack) is tee'd into a line which leads to both the coolant pump (not shown) and the truck cab heater core supply line (**3 in picture**). See attached schematic for further explanation.
- The 12v coolant pump is attached only to the line that supplies coolant to the truck sleeper heater core.



1. Return to engine from truck heater cores

4. Supply to cab heater core

2. Supply from truck engine

3. Supply from Pony Pack... Pony Pack Coolant Return

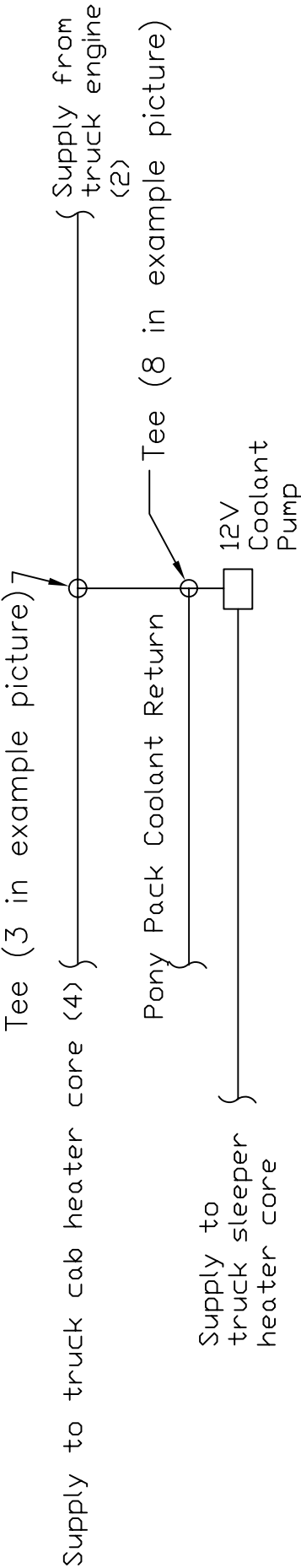
7. Pony Pack coolant source... Supply TO Pony Pack

8. To tee fitting (not shown)

5. Return from cab heater core

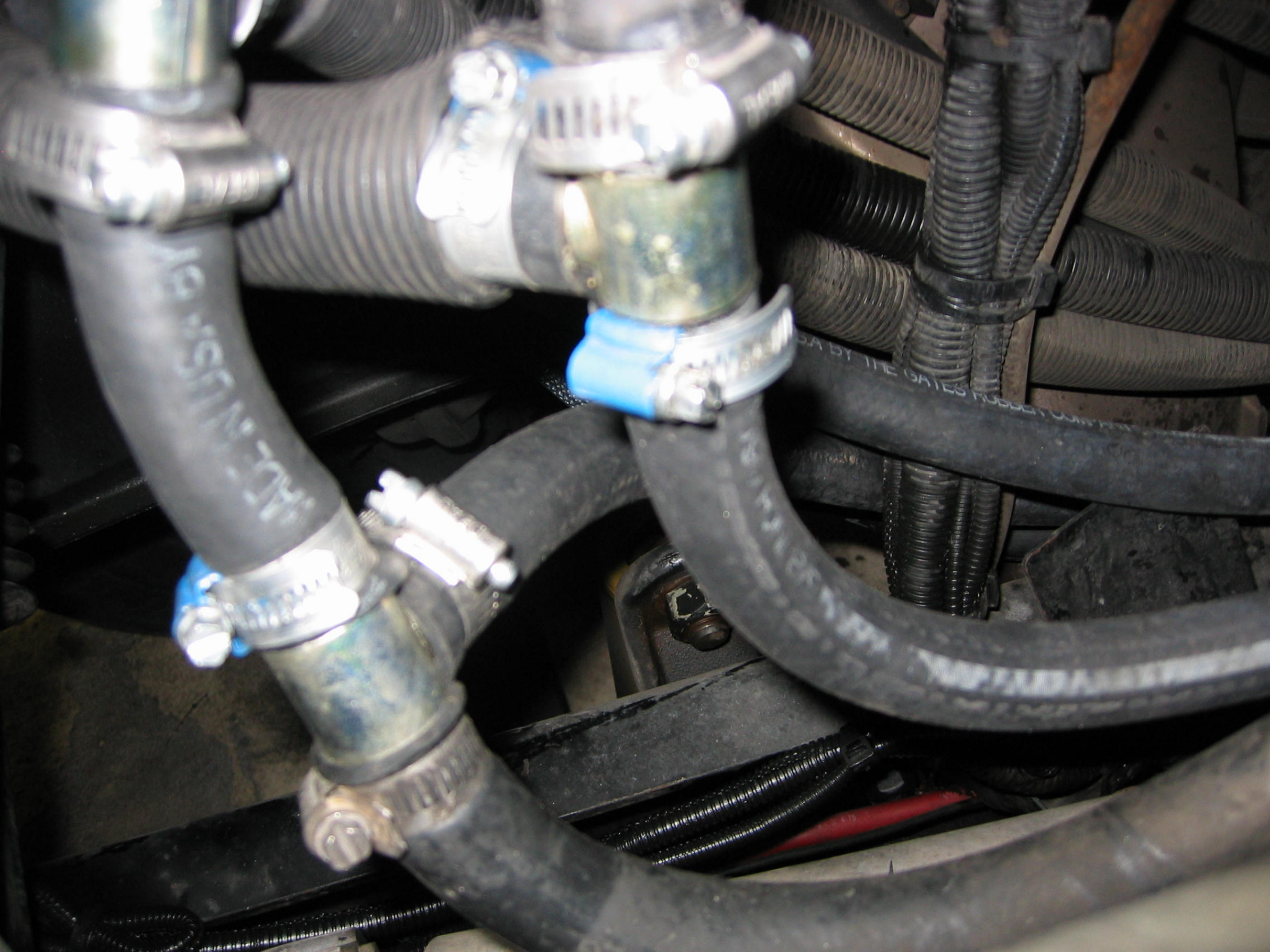
6. Return from sleeper heater core

MAKE, MODEL, YEAR
STERLING W/ MERCEDES



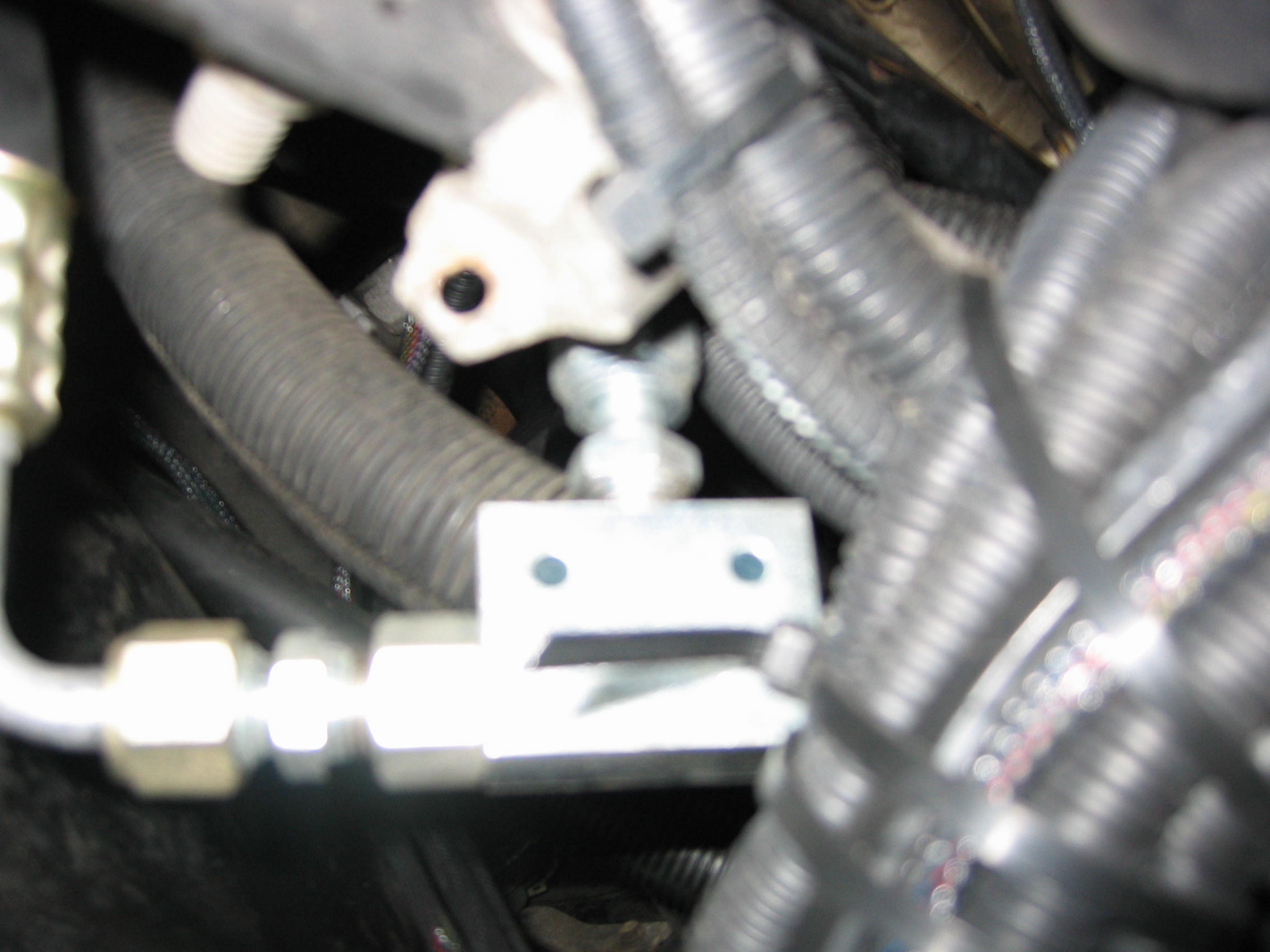
PONY PACK, INC. Albuquerque, NM		Sterling Coolant Pump Routing	
REV 0	DATE	12/21/07	















MEDINA OHIO

MC 257496
USDOT 500737
HF 123010
KYU 123089
PQ 5Q310643
VIN# 5AN89535

2006
MPSC

2006

OH 07
F T
A

BENTZ











GATES BLUE STRIPES
103662-EP CG MADE IN

m) SAE J2064 TYPE C CLASS II 500 PSI WP











